

TYPICAL MANHOLE
 NO SCALE

UNDISTURBED EARTH, OR COMPACTED STRUCTURAL FILL
 USE ONLY NET-CAST UNITS. DRY-CAST NOT ACCEPTABLE

FOR SHALLOW MANHOLES WHERE THERE IS A
 CONC. SECTION, A FLAT SLAB COVER SHALL BE
 SUBSTITUTED FOR THE CONE SECTION.
 RECTANGULAR OPENINGS
 TYP. M.H. JOINT
 JOINT WITH ASPHALT
 JOINT SEALER
 FLEXIBLE CONNECTION
 CAST INTO WALL

PRECAST CONCRETE MANHOLE
 RISEY SECTION AS MANUFACTURED
 BY FORT MILLER CO. INC. OR EQUIVALENT

CONCRETE PROPAGINE
 MANHOLE STEPS 12" O.C.

PRECAST CONCRETE MANHOLE
 RISEY SECTION AS MANUFACTURED
 BY FORT MILLER CO. INC. OR EQUIVALENT

PRECAST CONCRETE MANHOLE
 RISEY SECTION AS MANUFACTURED
 BY FORT MILLER CO. INC. OR EQUIVALENT

8" COURSE OF IN-SITU
 NO. 2 CRUSHED STONE

CONCRETE MANHOLE
 NO SCALE

CONCRETE DIMENSIONS	HEIGHT
DIA. OPENING	24" OR 42"
	30"

1. INVERT SHALL BE FALLETED.

2. TRENCH BACKFILL SHALL BE A NATURAL RUN-OF-BANK (R.O.B.) SAND OR A MIXTURE OF
 CHUNKED STONE AND GRAVEL. FREE OF SOFT, NONDURABLE PARTICLES, ORGANIC MATERIALS AND ELONGATED
 PARTICLES AND SHALL BE WELL GRADED FROM FINE TO COARSE PARTICLES. BEDDING GRADATIONS SHALL BE
 AS FOLLOWS:
 NO. 40 0-70%
 NO. 40 0-100%
 NO. 200 0-70%
 NO. 200 0-100%

3. TRENCH BACKFILL SHALL BE A NATURAL RUN-OF-BANK (R.O.B.) SAND OR A MIXTURE OF
 CHUNKED STONE AND GRAVEL. FREE OF SOFT, NONDURABLE PARTICLES, ORGANIC MATERIALS AND ELONGATED
 PARTICLES AND SHALL BE WELL GRADED FROM FINE TO COARSE PARTICLES. BEDDING GRADATIONS SHALL BE
 AS FOLLOWS:
 NO. 40 0-70%
 NO. 40 0-100%
 NO. 200 0-70%
 NO. 200 0-100%

4. TRENCH SHALL BE IMPROVED IN ACCORDANCE WITH O.S.V.A. STANDARDS.



PRECAST CONCRETE MANHOLE
 NO SCALE

MULTIPLE INVERT

FORM SMOOTH CURVE

2" PIPE PENETRATION INTO
 M.H. (TOP)

PLAN

ONE-WAY INVERT

SMOOTH DROP INVERT INLET

SECTION A-A

STANDARD INVERT

ACROSS M.H.

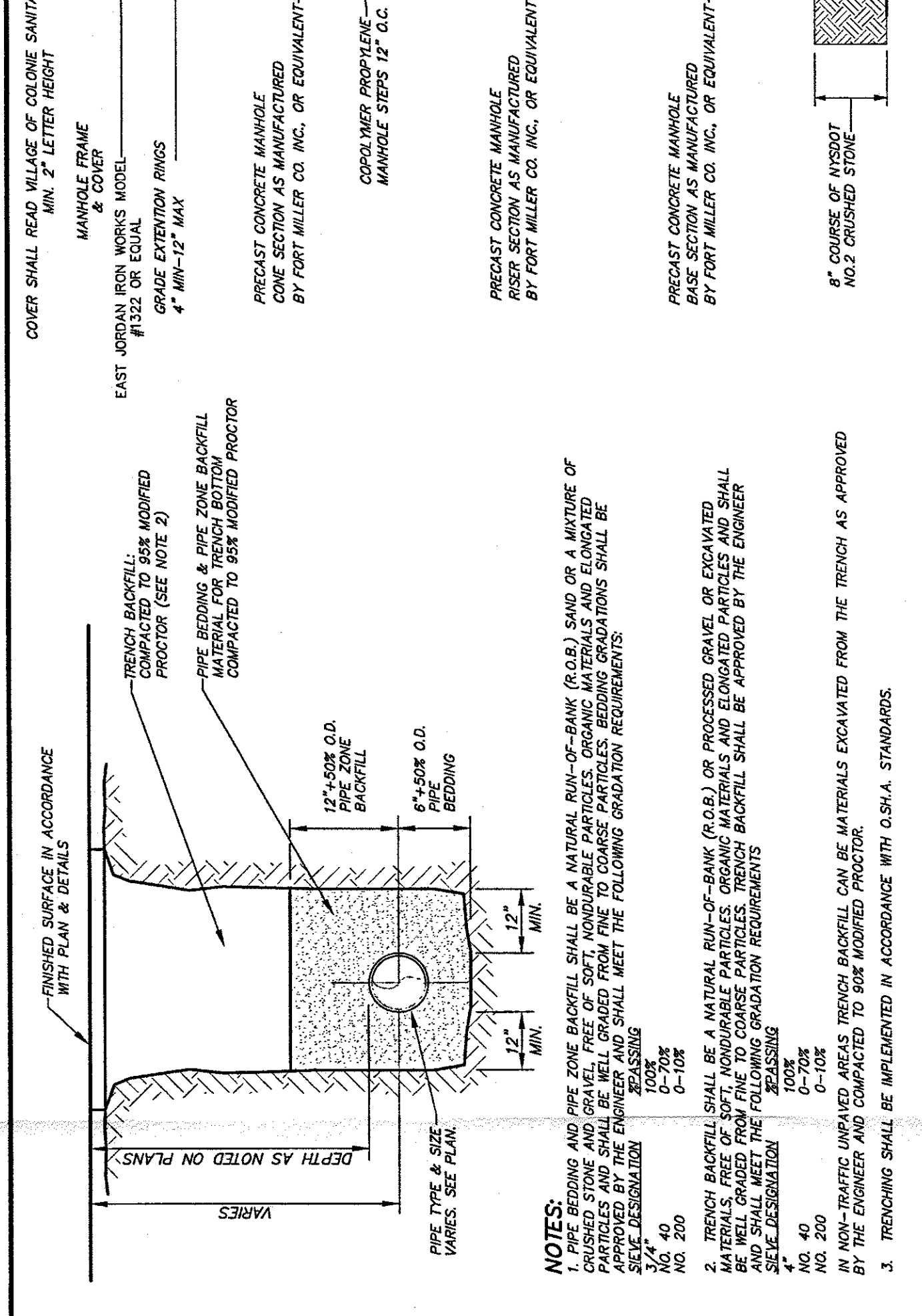
1/2" PITCH
 ACROSS INVERT

4" MIN. CLEARANCE
 TO 4\"/>

OWNER
 COLONIE CHRISTIAN
 LIFE CENTER, INC.
 P.O. BOX 12273
 ALBANY NY 12212
APPLICANT
 ROSETTI ACQUISITIONS
 427 NEW KARNER RD
 ALBANY, NY 12205

ALBANY COUNTY HEALTH DEPARTMENT

VILLAGE OF COLONIE PLANNING COMMISSION



TYPICAL SANITARY/STORM PIPE TRENCH DETAIL
 NO SCALE

FINISHED SURFACE IN ACCORDANCE WITH PLAN & DETAILS

EAST JORDAN IRON WORKS MODEL #10122 OR EQUAL

GRADE EXTENSION RISER 4" MIN-12" MAX

12" - 50% O.D. PIPE ZONE BACKFILL COMPACTED TO 90% MOISTURE PROCTOR (SEE NOTE 5)

6" - 50% O.D. PIPE BEDDING

12" MIN. VARIES

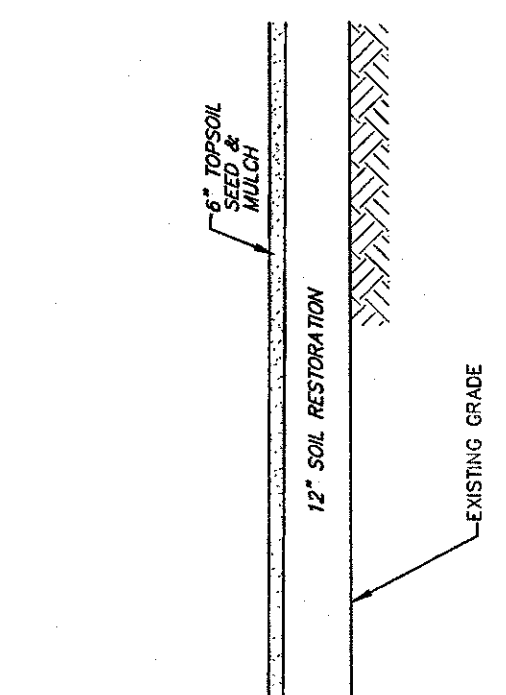
PIPE TYPE & SIZE VARIES - SEE PLAN.

NOTES:

1. TRENCH BACKFILL SHALL BE A NATURAL RUN-OF-BANK (R.O.B.) SAND OR A MIXTURE OF CHUNKED STONE AND GRAVEL. FREE OF SOFT, NONDURABLE PARTICLES, ORGANIC MATERIALS AND ELONGATED PARTICLES AND SHALL BE WELL GRADED FROM FINE TO COARSE PARTICLES. BEDDING GRADATIONS SHALL BE AS FOLLOWS:
 NO. 40 0-70%
 NO. 40 0-100%
 NO. 200 0-70%
 NO. 200 0-100%

2. TRENCH BACKFILL SHALL BE A NATURAL RUN-OF-BANK (R.O.B.) SAND OR A MIXTURE OF CHUNKED STONE AND GRAVEL. FREE OF SOFT, NONDURABLE PARTICLES, ORGANIC MATERIALS AND ELONGATED PARTICLES AND SHALL BE WELL GRADED FROM FINE TO COARSE PARTICLES. BEDDING GRADATIONS SHALL BE AS FOLLOWS:
 NO. 40 0-70%
 NO. 40 0-100%
 NO. 200 0-70%
 NO. 200 0-100%

3. TRENCH SHALL BE IMPROVED IN ACCORDANCE WITH O.S.V.A. STANDARDS.



INFILTRATION TRENCH & FILTER STRIP
 NO SCALE

UNDERGRAIN

4" WIDE CRUSHED STONE DRP EDGE

12" MIN. 12" SOIL RESTORATION

EXISTING GRADE

8" TOPSOIL SEED & MULCH

SOIL DECOMPACTION NOTES:

1. BRINS SUBSOIL TO FINAL GRADE MINUS 8 INCHES.

2. APPLY 3 INCHES OF COMPOST OVER SUBSOIL.

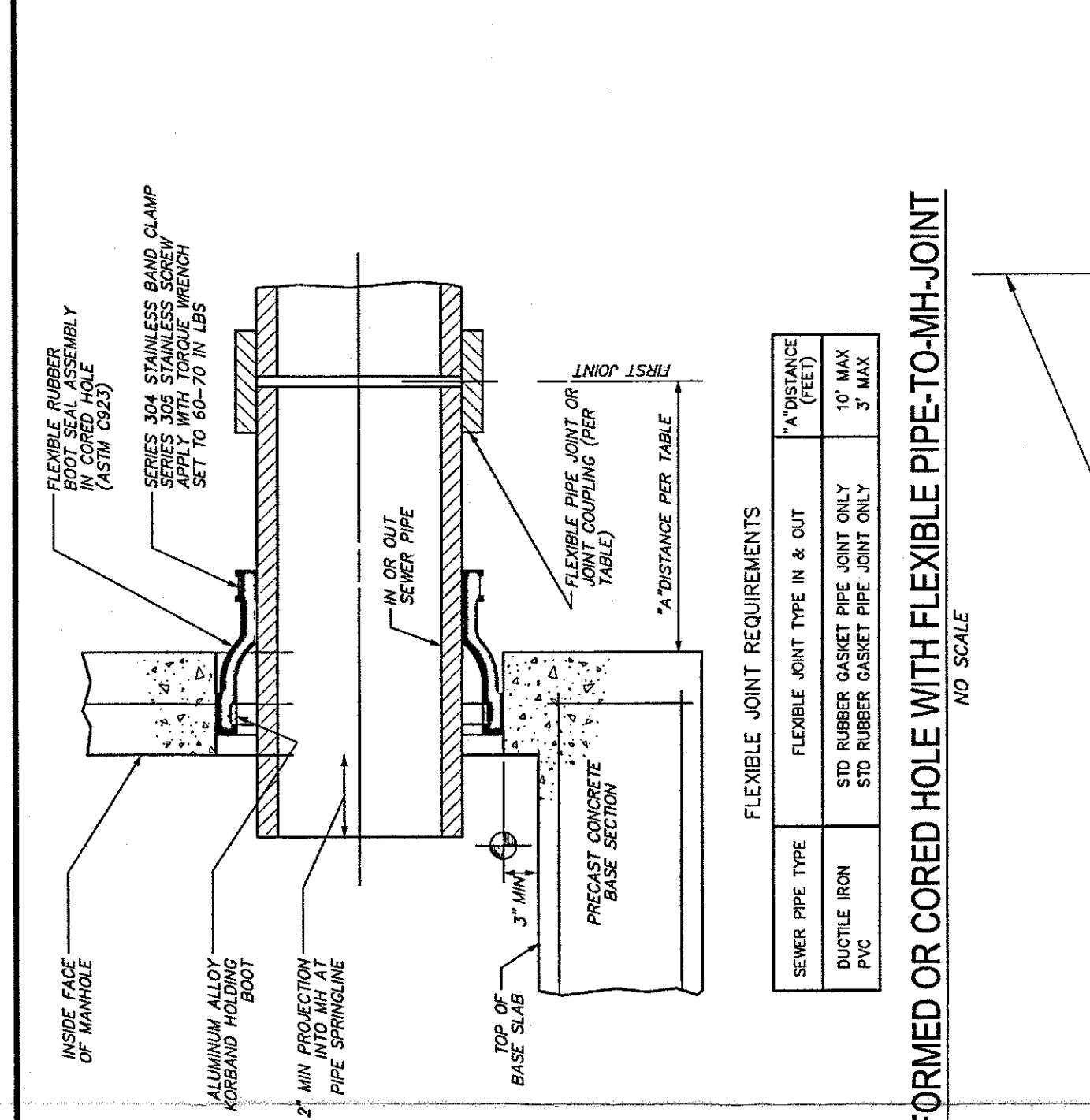
3. TILL COMPOST INTO SUBSOIL TO A DEPTH OF 12 INCHES CIRCULATING AIR AND COMPOST INTO THE SUBSOIL.

4. ROCK-BOX ALL UNPULVERIZED STONE/ROCK MATERIALS OF 4 INCHES AND LARGER AND REMOVE FROM THE SITE.

5. APPLY 6 INCHES OF TOPSOIL, SEED AND MULCH.

6. RE-NEATED SOIL SHOULD ALLOW 12 INCHES OF PENETRATION OF A 3/8" DIAMETER ROD INTO THE SOIL BY USING ONLY BODY WEIGHT.

7. APPLY FULL SOIL RESTORATION PER INSECT PUBLICATION ENTITLED "DEEP RIPPING AND DE-COMPACTION, DEC. 2008".



FORMED OR CORED HOLE WITH FLEXIBLE PIPE-TO-MH-JOINT
 NO SCALE

FLEXIBLE RUBBER FOOT SEAL ASSEMBLY (ASTM D1562)

SERIES 504 STAINLESS BAND CLAMP APPLIED WITH TORQUE WRENCH SET TO 80-70 IN LBS

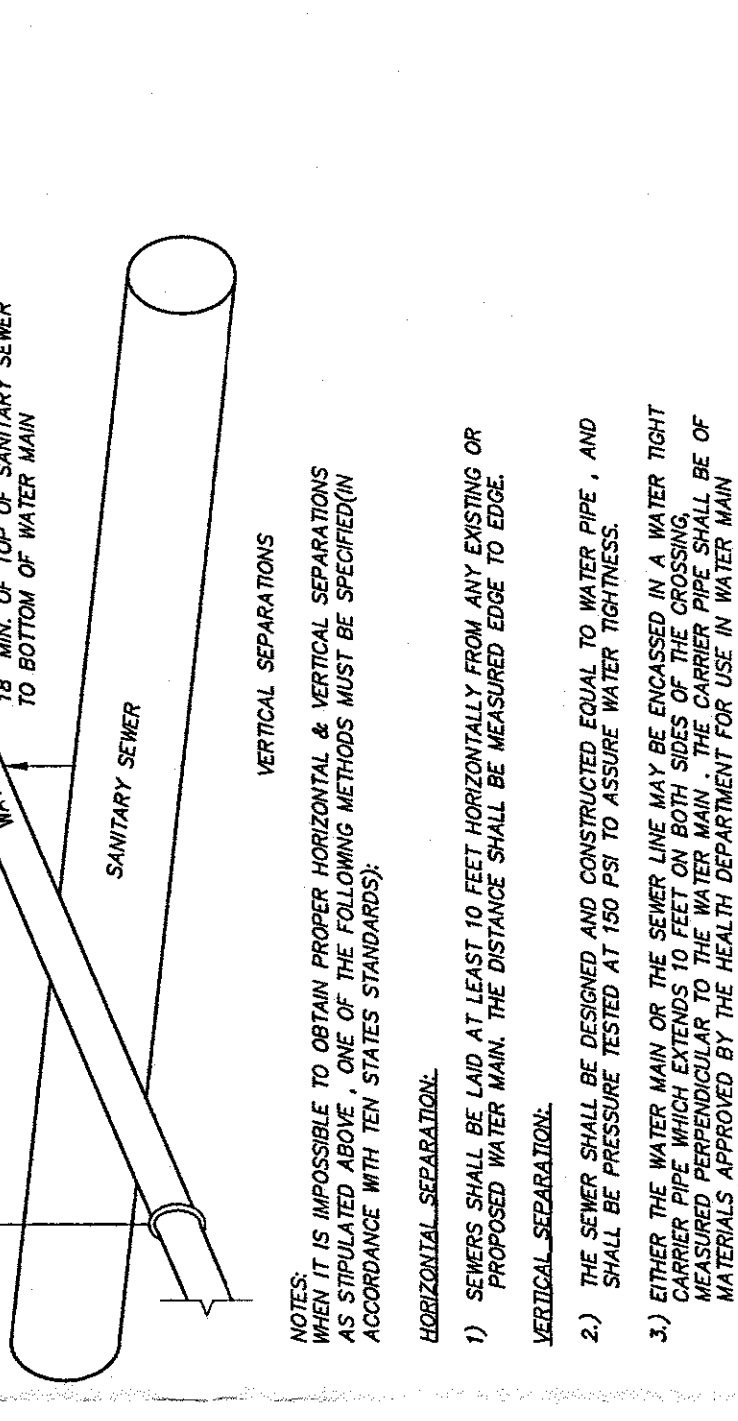
FLEXIBLE PIPE JOINT OR STD RUBBER GASKET PIPE JOINT ONLY

1" DISTANCE PER TABLE

TABLE

SEWER PIPE TYPE	FLEXIBLE JOINT TYPE IN & OUT	*TRENCH WIDTH (FEET)
RUBBER IRON	STD RUBBER GASKET PIPE JOINT ONLY	10" MAX
PVC	STD RUBBER GASKET PIPE JOINT ONLY	3" MAX

* DISTANCE PER TABLE



WATER MAIN CROSSING
 NO SCALE

SANITARY SEWER

WATER MAIN

VERTICAL SEPARATIONS

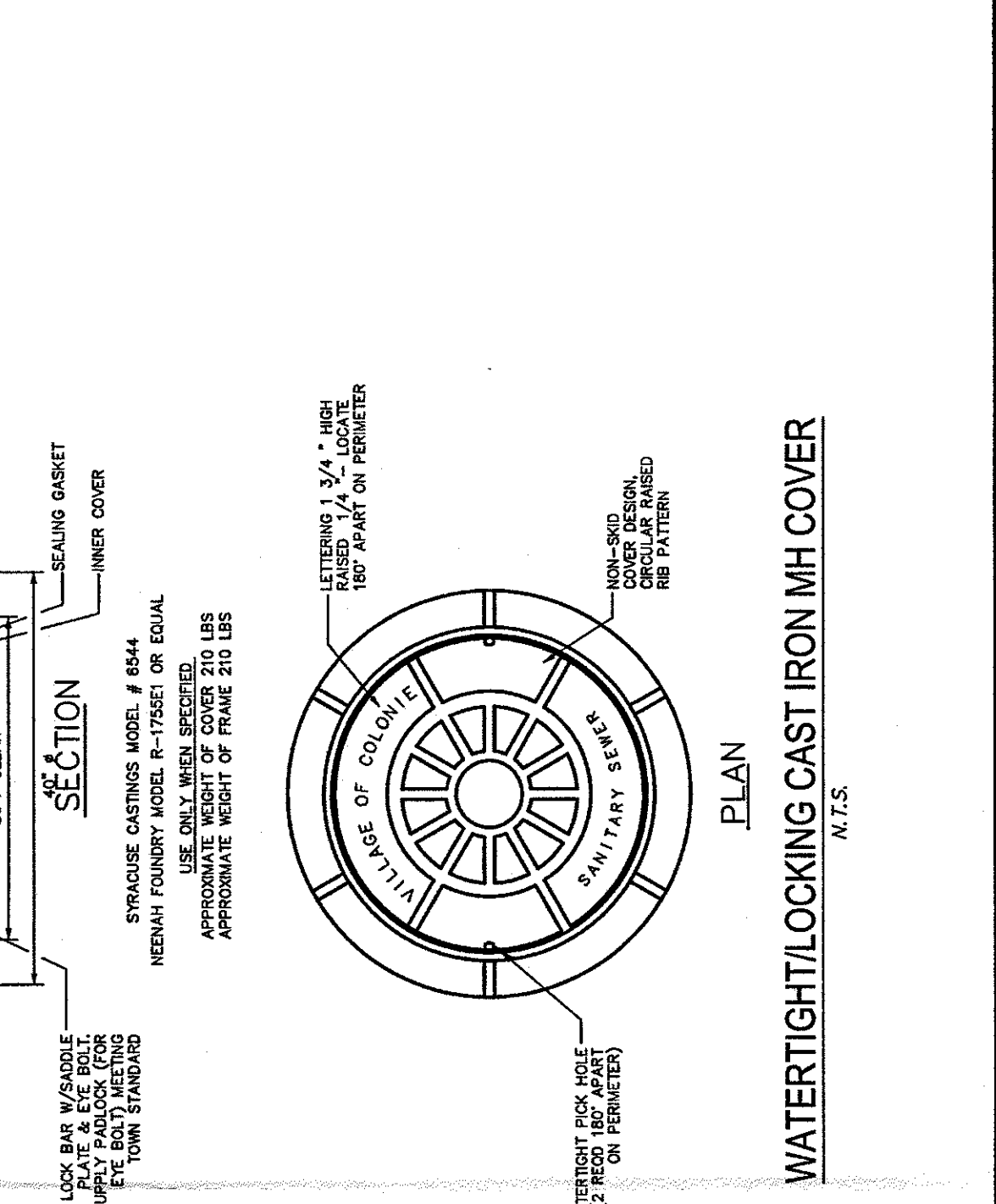
HORIZONTAL SEPARATIONS

NOTES:

1) SEWERS SHALL BE LAID AT LEAST 1 FEET HORIZONTALLY FROM ANY EXISTING OR PROPOSED WATER MAIN. THE DISTANCE SHALL BE MEASURED EDGE TO EDGE.

2) THE SEWER SHALL BE DESIGNED AND CONSTRUCTED EQUAL TO WATER PIPE, AND SHALL BE PRESSURE TESTED AT 150 PSI TO ASSURE WATER TIGHTNESS.

3) EITHER THE WATER MAIN OR THE SEWER MAY BE ENCASED IN A WATER TIGHT MATERIAL PERPENDICULAR TO THE WATER MAIN. THE COVER PIPE SHALL BE OF MATERIALS APPROVED BY THE HEALTH DEPARTMENT FOR USE IN WATER MAIN CONSTRUCTION.



WATERTIGHTLOCKING CAST IRON MH COVER
 NO SCALE

3 1/2" MIN. 30 1/4" OPENING

36" COVER

30" CLEARANCE

30" CLEARANCE

30" CLEARANCE

30" CLEARANCE

SEALING GASKET

INNER COVER

SECTION

STRONG CASTINGS MODEL # 8644

NEWMAN FOUNDRY MODEL R-17581 OR EQUAL

USE ONLY WHEN SPECIFIED.

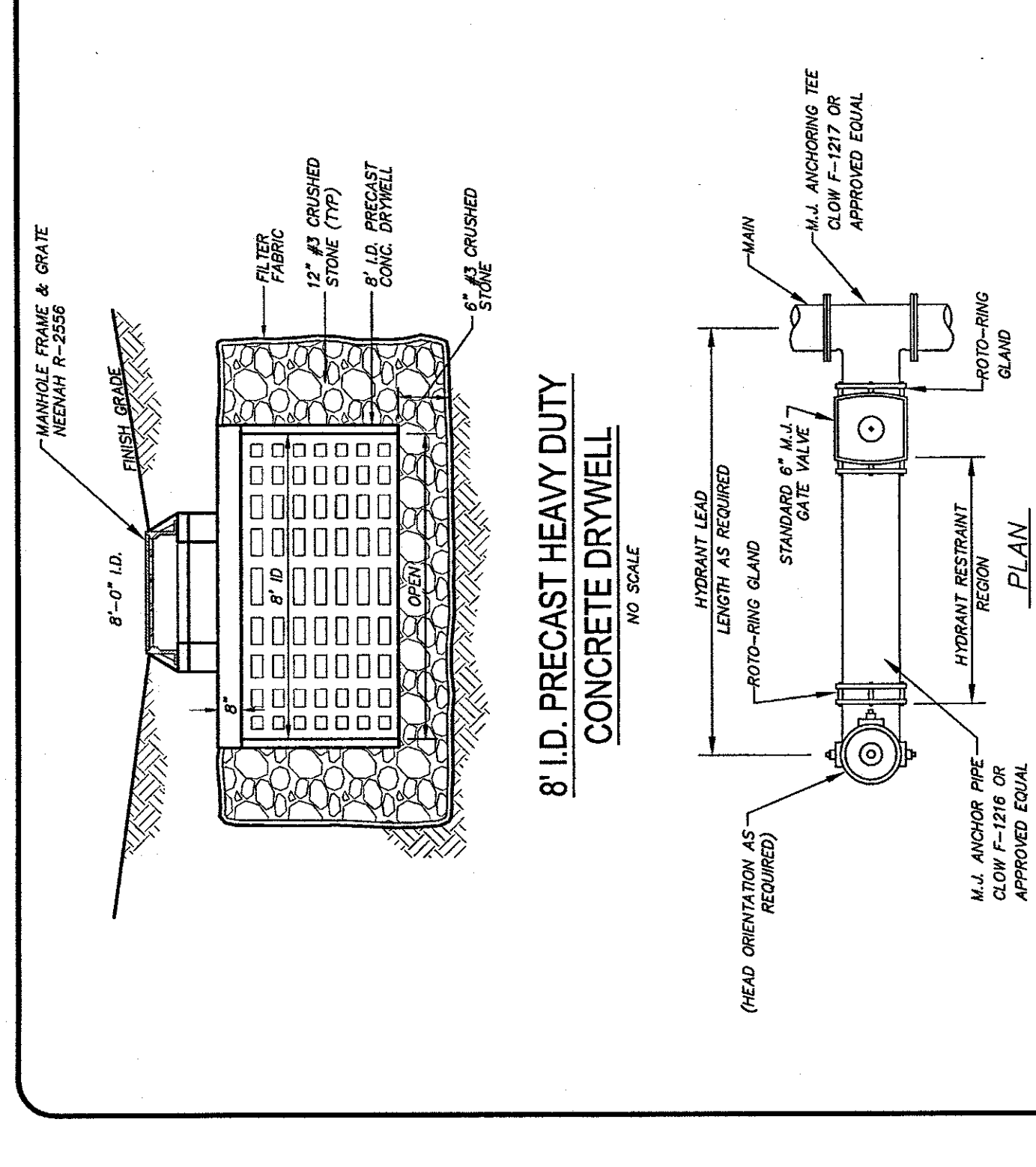
APPROXIMATE WEIGHT OF FRAME 210 LBS

LETTERS 1.5" x 1.5" MIN. RAISED 1/4" LOCATE 18" APART ON PERIMETER

PLAN

NON-RING DESIGN. CIRCULAR BANDING PATTERN.

WATER TIGHT LOCKING CAST IRON MH COVER



**8\"/>
 NO SCALE**

MANHOLE FRAME & GRATE NEMAH R-2556

8" I.D.

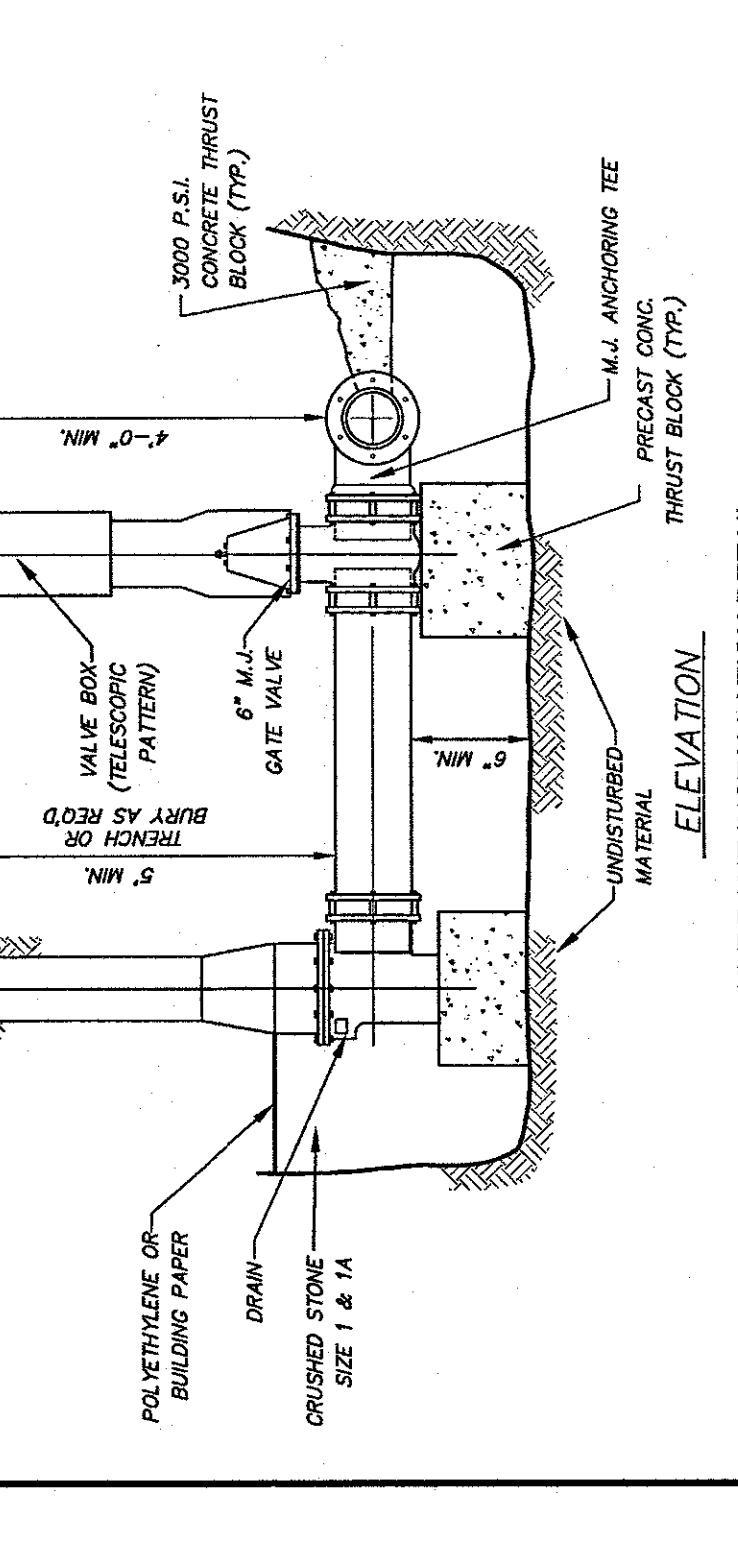
6" CRUSHED STONE

8" I.D. PRECAST CONC. DRYWELL

12" CRUSHED STONE

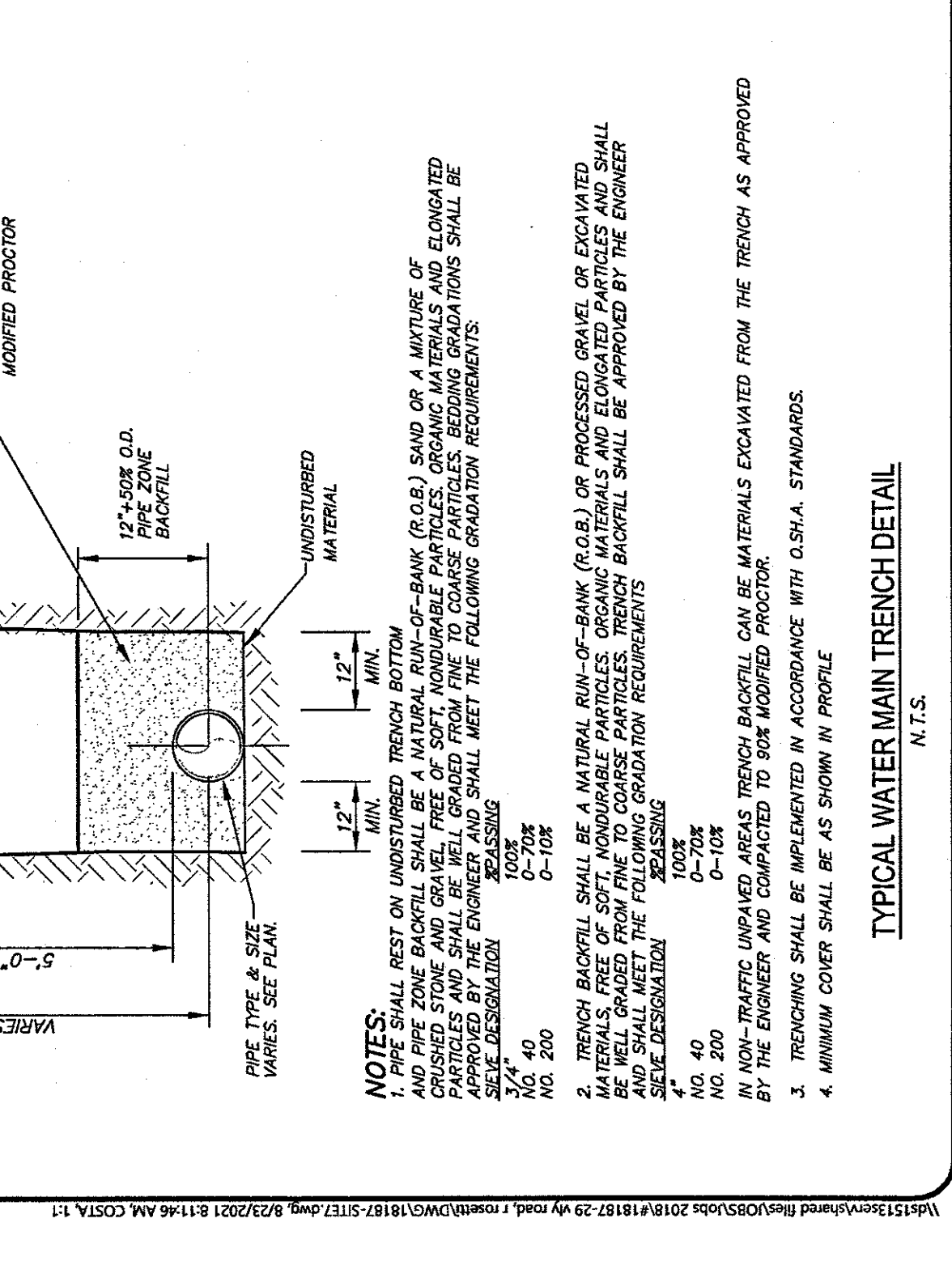
12" CRUSHED STONE (TOP)

5\"/>



HYDRANT INSTALLATION DETAIL
 NO SCALE

FLUSH WITH PAVEMENT OR 1\"/>



TYPICAL WATER MAIN TRENCH DETAIL
 NO SCALE

FINISHED SURFACE IN ACCORDANCE WITH PLAN & DETAILS

TRENCH BACKFILL AS MOISTURE PROCTOR (SEE NOTE 2)

PIPE ZONE BACKFILL MATERIAL FOR 5" - 0" MIN. COMPACTED TO 90% MOISTURE PROCTOR

12" - 50% O.D. PIPE ZONE BACKFILL

5" - 0" MIN. VARIES

PIPE TYPE & SIZE VARIES - SEE PLAN.

NOTES:

1. ALL BEST OR UNDER TRENCH AND PIPE ZONE BACKFILL SHALL BE A NATURAL RUN-OF-BANK (R.O.B.) SAND OR A MIXTURE OF CHUNKED STONE AND GRAVEL. FREE OF SOFT, NONDURABLE PARTICLES, ORGANIC MATERIALS AND ELONGATED PARTICLES AND SHALL BE WELL GRADED FROM FINE TO COARSE PARTICLES. BEDDING GRADATIONS SHALL BE AS FOLLOWS:
 NO. 40 0-70%
 NO. 40 0-100%
 NO. 200 0-70%
 NO. 200 0-100%

2. TRENCH BACKFILL SHALL BE A NATURAL RUN-OF-BANK (R.O.B.) SAND OR A MIXTURE OF CHUNKED STONE AND GRAVEL. FREE OF SOFT, NONDURABLE PARTICLES, ORGANIC MATERIALS AND ELONGATED PARTICLES AND SHALL BE WELL GRADED FROM FINE TO COARSE PARTICLES. BEDDING GRADATIONS SHALL BE AS FOLLOWS:
 NO. 40 0-70%
 NO. 40 0-100%
 NO. 200 0-70%
 NO. 200 0-100%

3. TRENCH SHALL BE IMPROVED IN ACCORDANCE WITH O.S.V.A. STANDARDS.

4. MINIMUM COVER SHALL BE AS SHOWN IN PROFILE.